

WEBERRESCUE
SYSTEMS

OUR TECHNOLOGIES





FORGED

High-strength, **forged blades** for the hardest applications



FORGED

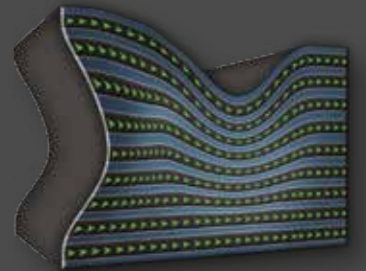
Formed from one piece of material

The forging process leaves grain structure uninterrupted and produces a stronger blade

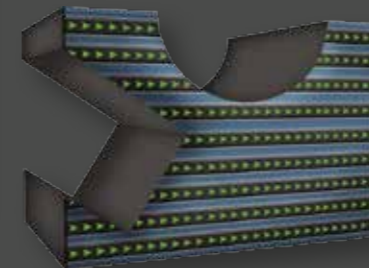
Reduced risk of broken blades



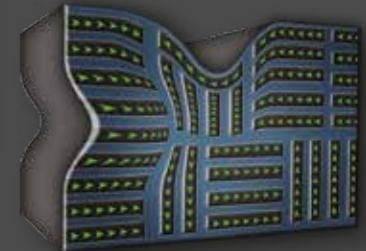
FORGED



MACHINED



CAST





PLUS BLADE INSERTS

Minimum downtime, only 2 minutes to change blades for everyone, then carry on working

Cutter blades with **inserts** made of high strength alloy to cut reinforced vehicle body parts

Especially designed and made for modern vehicles

Long blade life due to less wear and tear of inserts

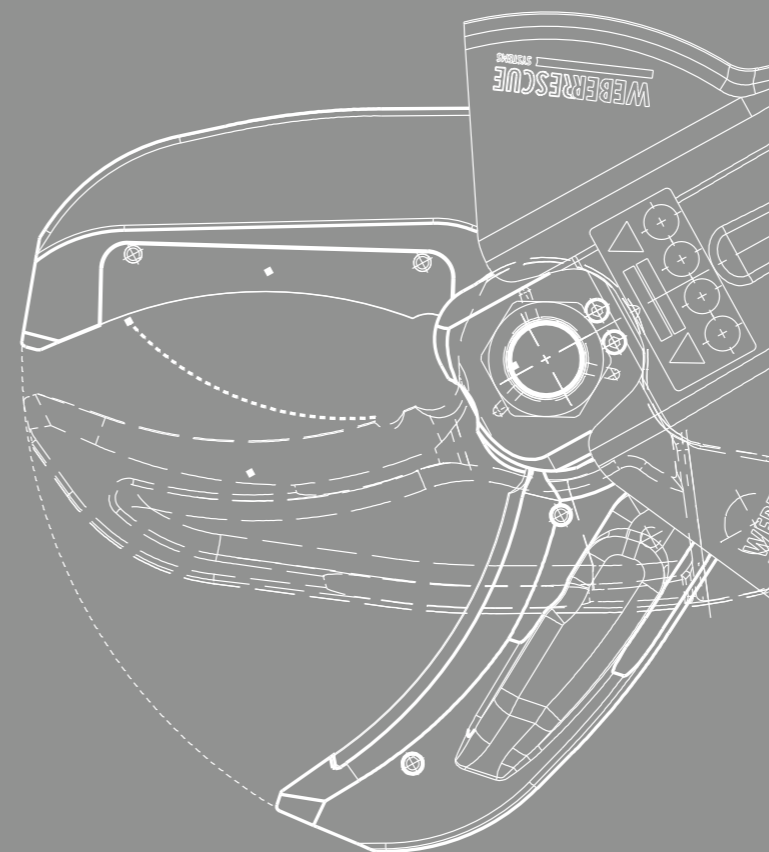
Better cutting performance

Lower maintenance costs
(change inserts, not complete blades)

Various existing cutters upgradeable

Patented





XTREME CUTTING TECHNOLOGY
for excellent cutting, especially
for modern materials

Lower tension on blades due to the
optimal cutting angle and edges plus
overlapping design

Pulls the material into the strongest
cutting point

Shorter blades for outstanding operation



ULTIMATE
Further optimised blades for
better cutting performance



High strength U-Shaped forged
blades for the toughest applications

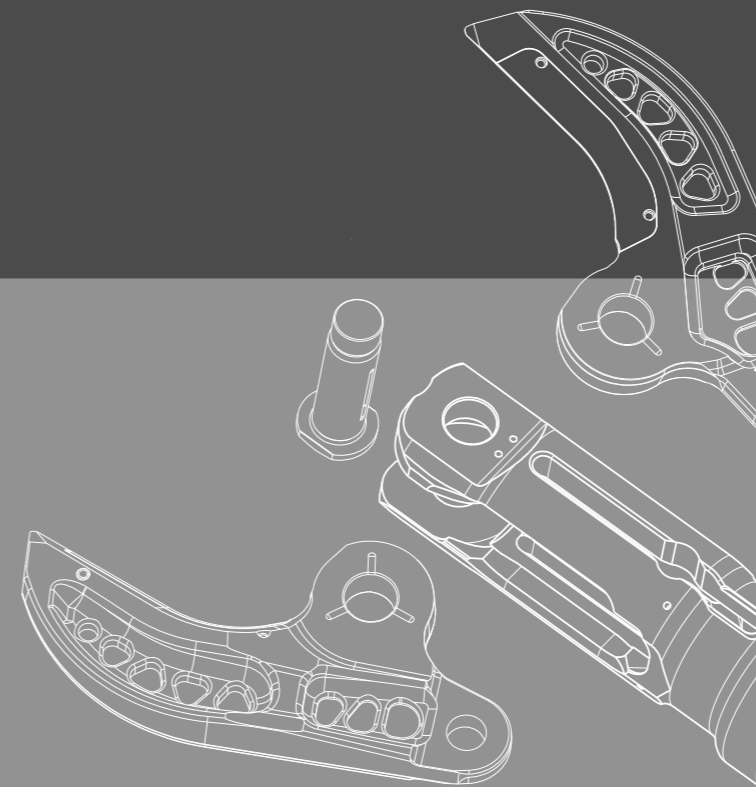
Extensive overlapping of blades
for optimised cutting, continuous
cutting possible

Reduced weight and better stability
due to **perforated blade design**





UPGRADE
Upgrade to new technologies
as an economical alternative



**Conversion / upgrade to modern
device versions**

**Various possibilities for cutting
equipment from the RS and RSX series**

Conversion of SKS to SINGLE couplings

**Cost savings, because the procure-
ment of a new device is avoided**





GRIP
Spreader tips fitted
with studs for extra grip

TeamGOLD tips with **studs** for extra strong grip

Titanium nitride coated, high-strength tips for better surface strength and wearing protection

Studs bite into the material

No slipping

Tips secured by integrated captive pins for easy removal and replacement

Unique surface hardened areas on inside and outside of arms increasing effective working area





Laser-etching on the piston rod - always see the remaining length!

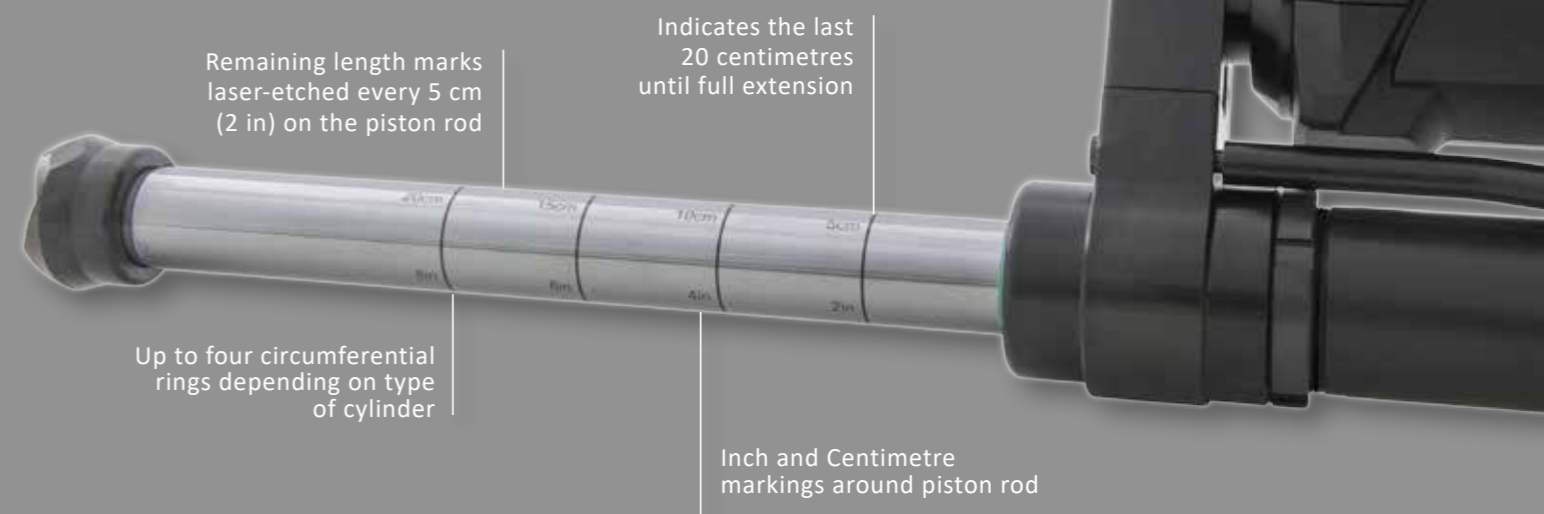
Remaining extension length on piston rod

Early warning system whether the ram is long enough for the job

Circumferential rings in Inch and Centimetre

Indicates the last 20 centimetres until full extension

Time saver at work



EXTENDABLE
Quickly creates space in the interior



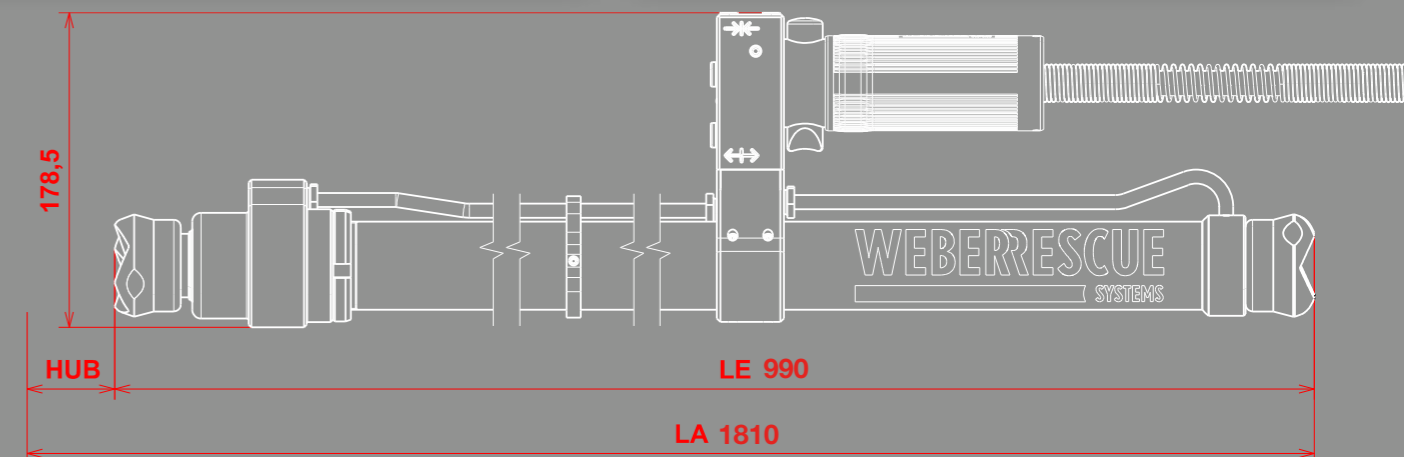
Perfect for enlarging collapsed and deformed interior vehicle space and aid working within the vehicle

Lightweight and compact

Body with space-saving diameter

Ram can be operated from outside the vehicle

Large **extended length of 1,810 mm**




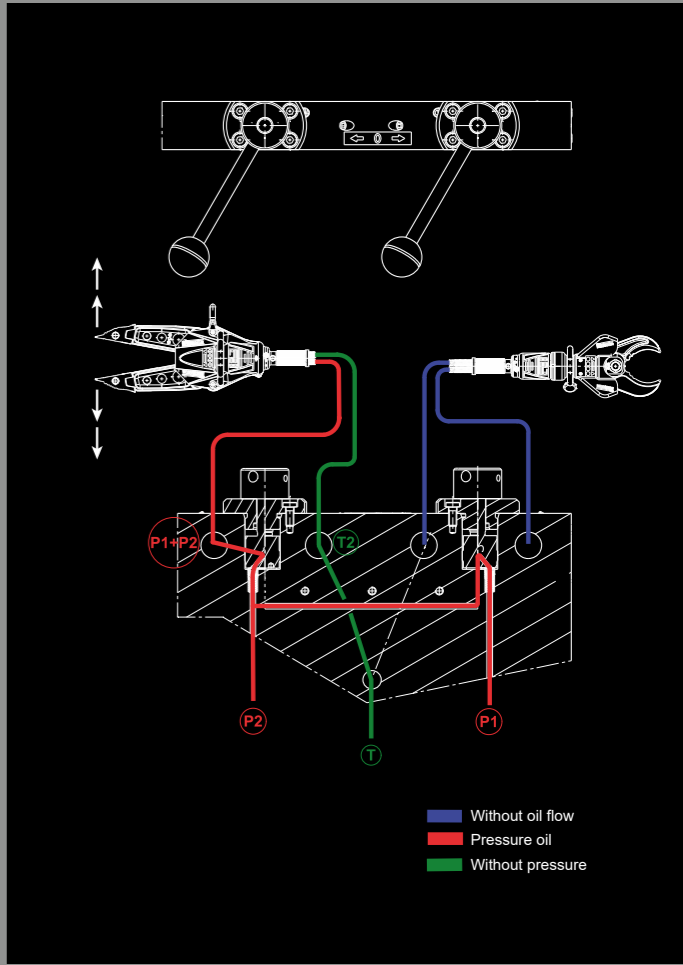
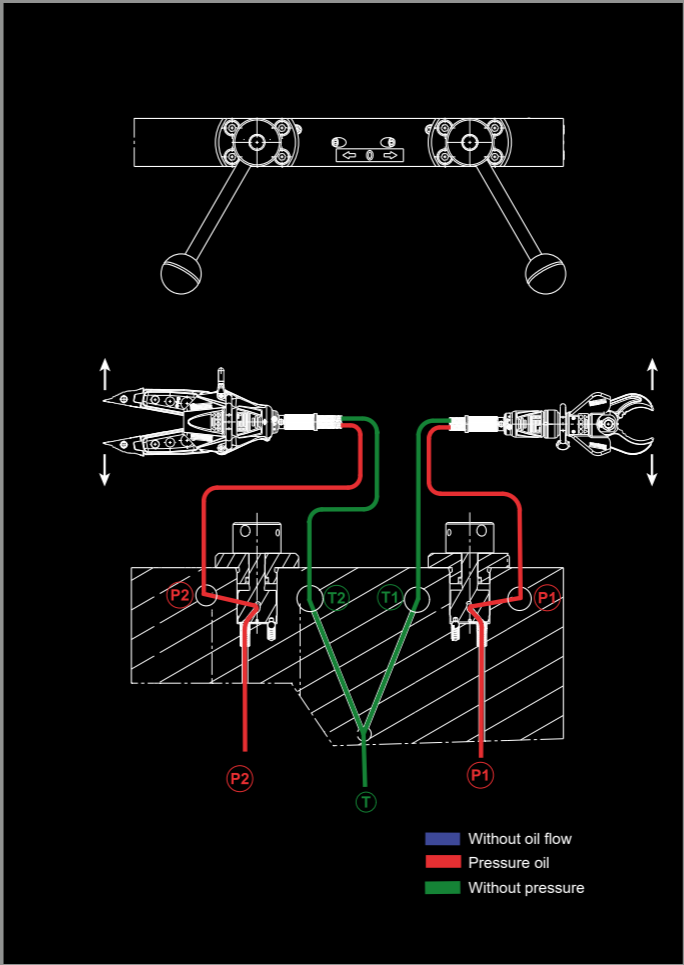


Shift position 1:
Simultaneous operation
of two tools

Shift position 2:
TURBO mode = double speed with one tool
and same power



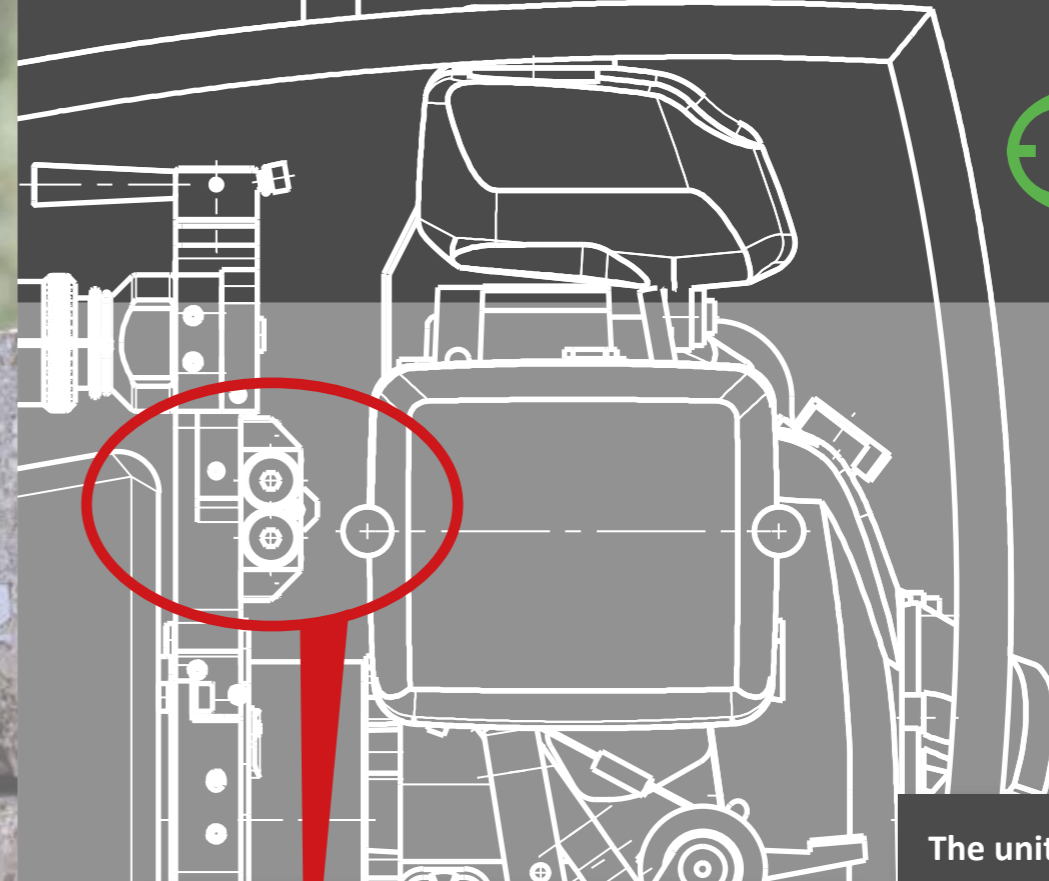
 **TURBO-SPEED**
Maximum power through double speed
“turbo” operation of one tool





ECO DRIVE

Reduces excess noise and stress by **automatic speed control**



The unit remains on “tick-over”, until your rescue tool calls for power

Engine revs are automatically increased when the tool control button is pressed, giving the operator “revs on demand”

Low noise emission

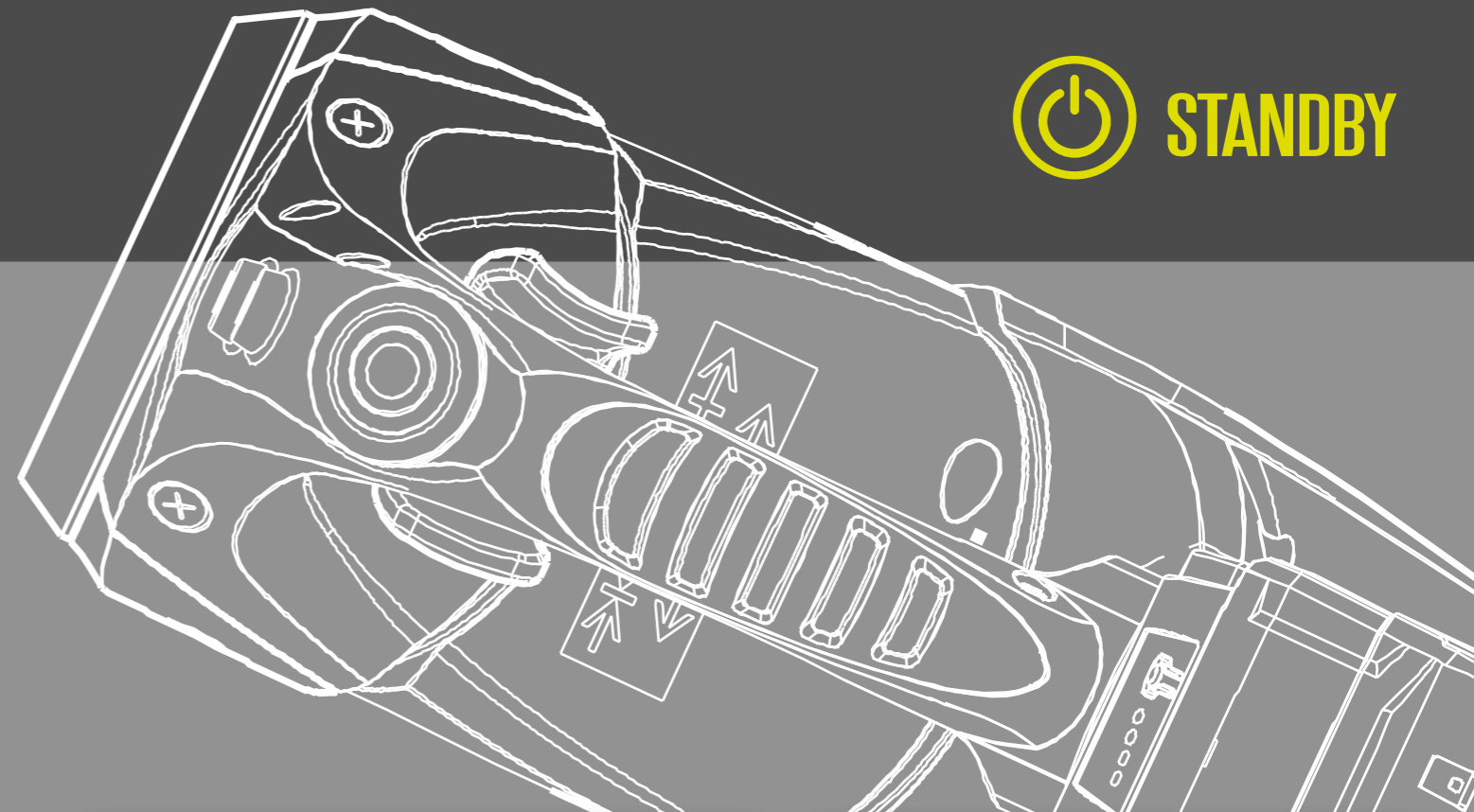
Less exhaust emissions

Saves fuel - More fuel efficient

Also available in electric version or as battery-driven power units



STANDBY
Power-saving mode -
ready for operation at the push
of a button



- Standard with all cordless devices
- Automatic switching to standby mode
- Reduced power consumption
- Protects the battery
- Can be reactivated at any time by pressing a button
- No preparation and waiting time



COMPACT

Great operating capacity with minimum space and weight

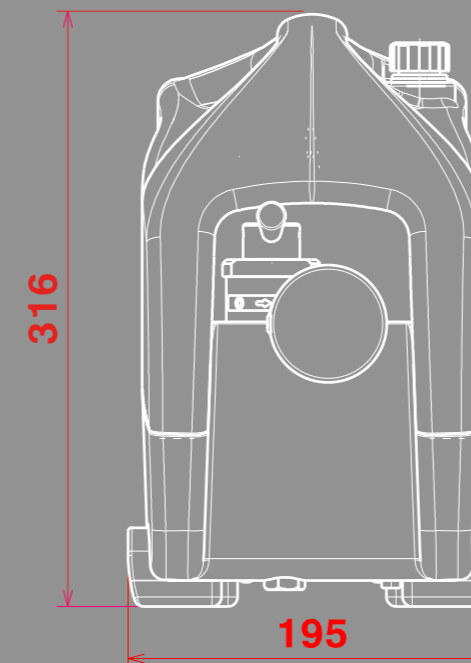


Small, lightweight and flexible

Various possibilities for installation in the vehicle

Saves space and weight

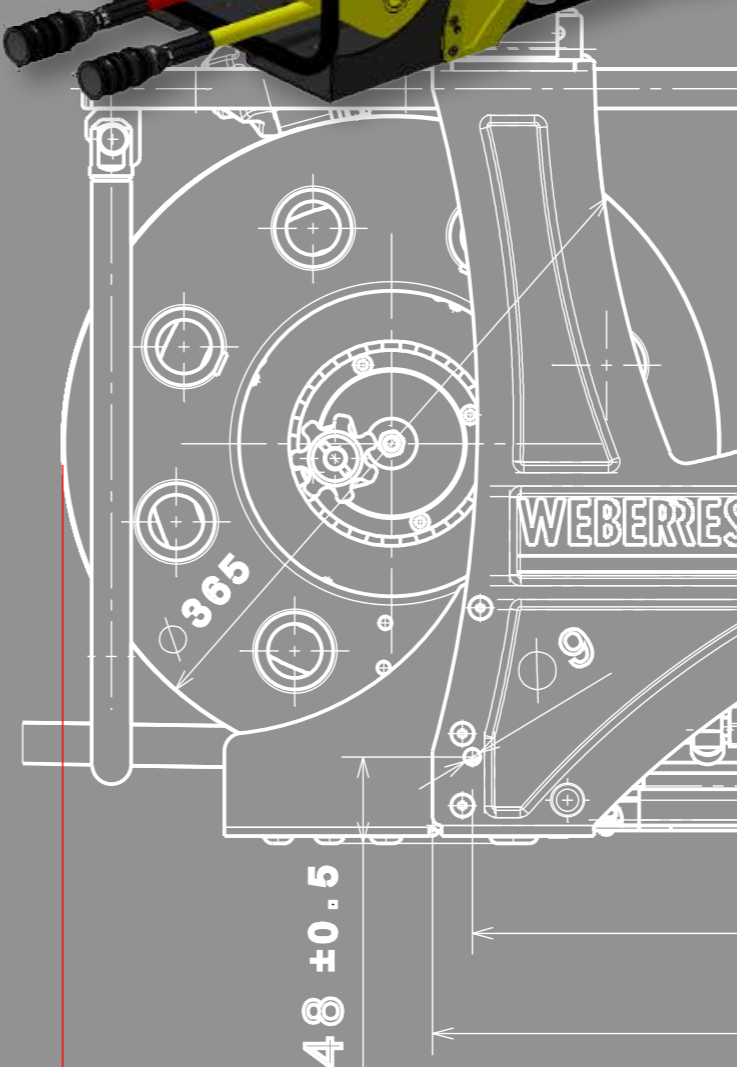
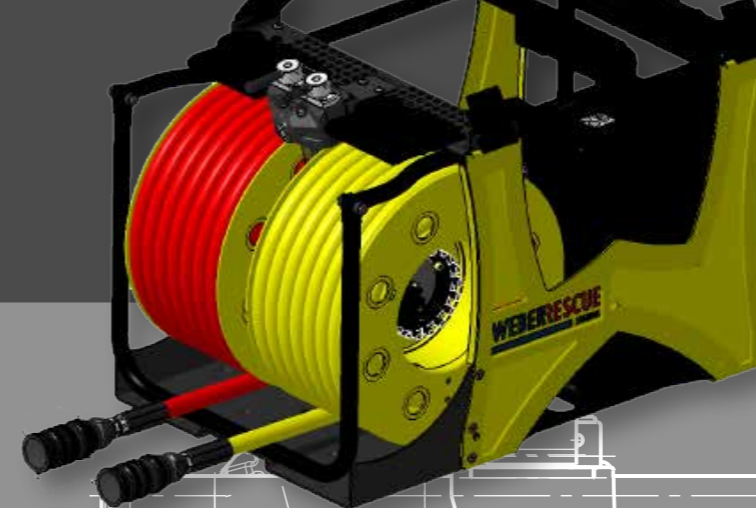
High power





PERFORMANCE

Higher working speed with more power



PERFORMANCE



Larger oil volume for simultaneous operation of all tools

Extremely high delivery rate

Central control unit (illuminated)

Large carrying handles

Integrated tool brackets, individually adjustable for all tools

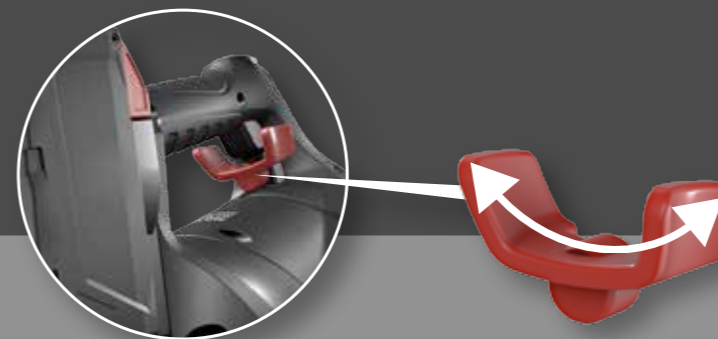
Compact, modern design

711



BATTERY TOOLS E-FORCE 2

High-performance rescue tools for independent working without trailing hoses



Sensitive control with clear identification of open and close movement by means of a **rocker switch**

Improved drive unit for longer working time, higher operating speed and increased efficiency

Operational time now nearly doubled and operating speed increased compared to previous generation models

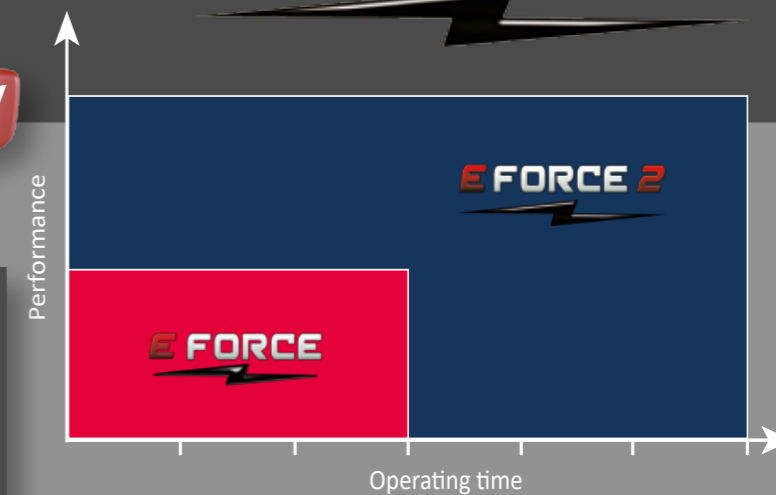
Long operating time due to 5,0 Ah capacity (28 V Li-Ion battery)

Fibre-reinforced case for durable use

LED lights for better view in the working area and low lighting

New drive unit will retrofit onto previous generation 1 E-FORCE tools and mobile rescue tools

E FORCE 2





CHARGE
Rechargeable Li-Ion battery
for independent working



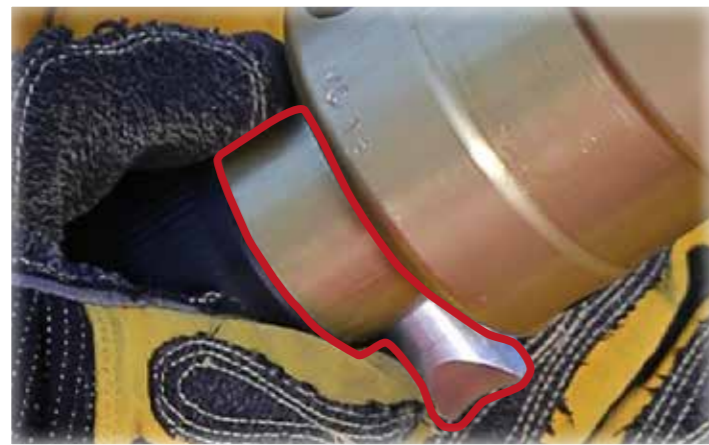
5,0 Ah battery technology
(28 V Lithium-Ion battery)

Long operating time

Compatible with MILWAUKEE
battery tools in the M28 range

Various accessories





WEBER **PUSH-BUTTON-CONTROL**

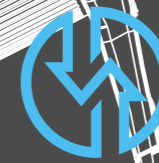
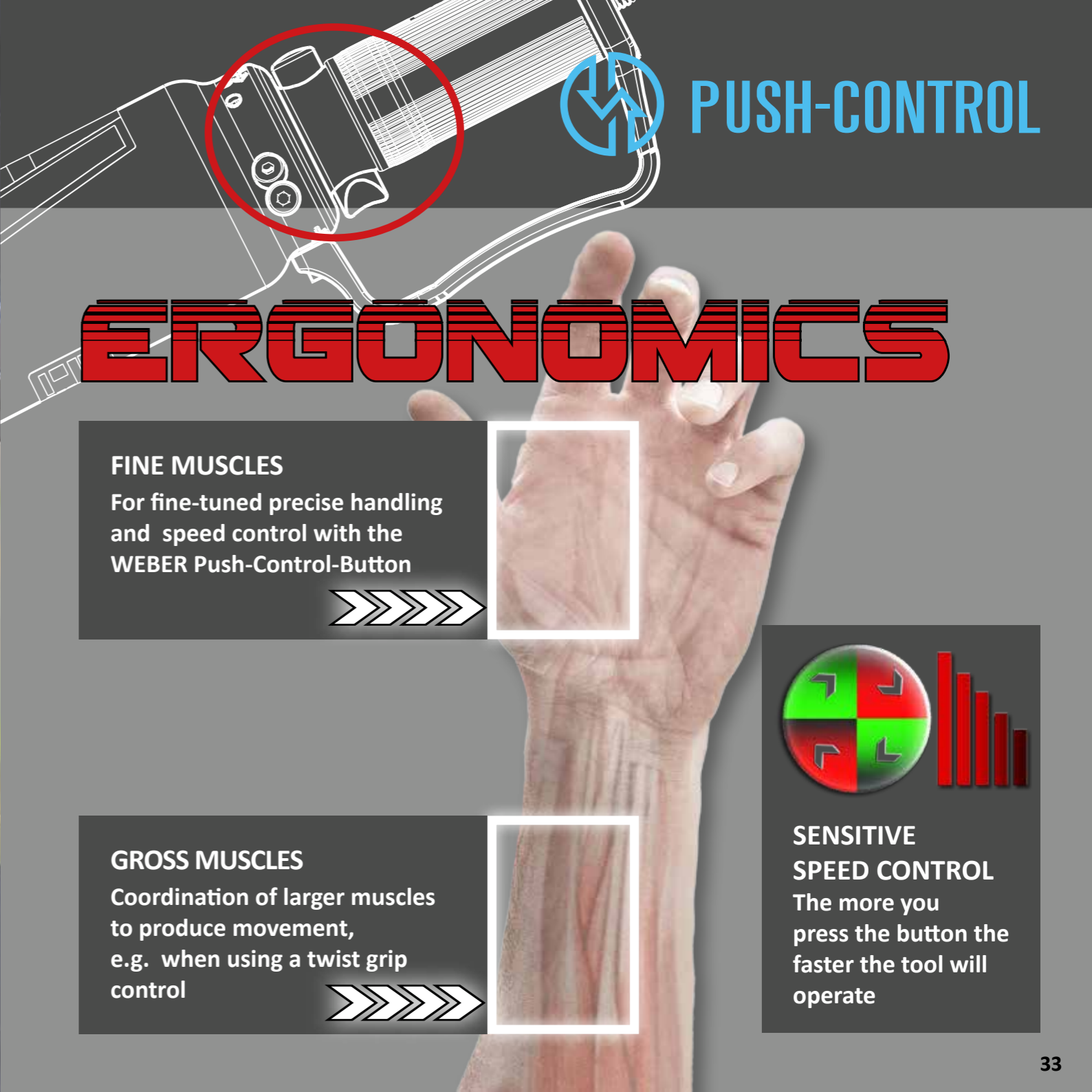
Intuitive operation, „blind“ to touch

Sensitive operation with

INDEX FINGER and **THUMB**

Main operation directions
(index finger on wedge-shaped control)

- Cutter -> CUTTING
- Spreader -> OPENING
- Ram -> EXTENDING



PUSH-CONTROL

ERGONOMICS

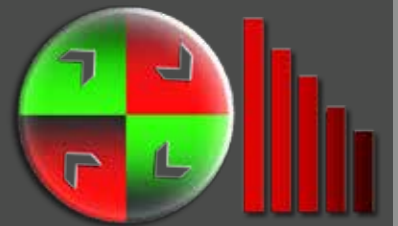
FINE MUSCLES

For fine-tuned precise handling
and speed control with the
WEBER Push-Control-Button



GROSS MUSCLES

Coordination of larger muscles
to produce movement,
e.g. when using a twist grip
control



SENSITIVE SPEED CONTROL

The more you
press the button the
faster the tool will
operate



360° HANDLE
Rotatable
and detachable



Flexible and easily adjustable handle
for any cutting position

Ideal for restricted and confined
spaces

Easily identifiable coloured locking
and adjustment knobs



SINGLE COUPLING

Coupling
under pressure



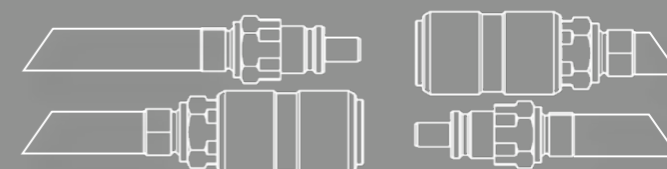
Freely rotatable 360°

Coupling can be fitted to both -
twin and coaxial hoses

Quick and easy connection when
wearing protective gloves and
with restricted sight

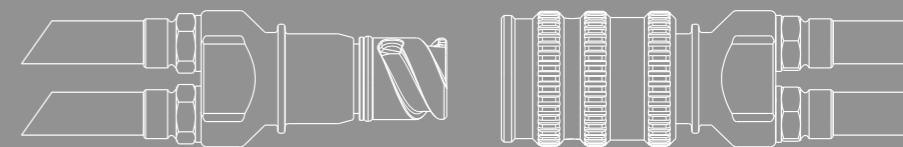


- Common coupling:
- 2 actions for coupling
 - Coupling only possible without pressure
 - Pressure relief plug needed



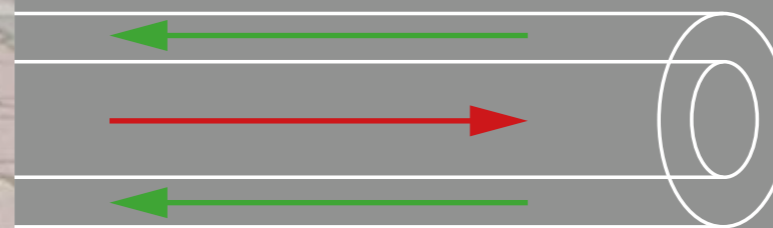
Common coupling
can be replaced
with SINGLE
coupling!

- SINGLE coupling:
- 1 action for coupling
 - Can be coupled under pressure
 - No need for any kind of pressure relief plug

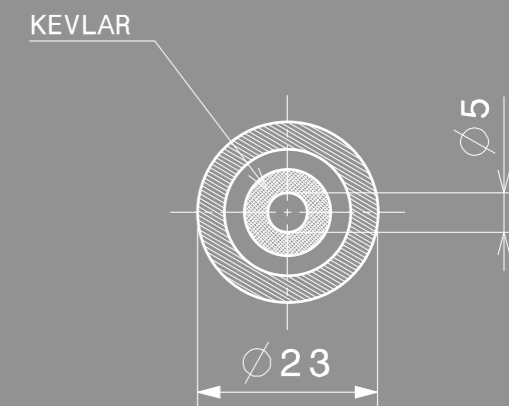




Hose-in-hose-system
Flexible hose line
No hose loops and twisting
Protection of the interior
high-pressure hose



■ Tank pipe
■ Pressure pipe





LIGHTWEIGHT
Lightweight and
operationally flexible
for use in all terrains



LIGHTWEIGHT



Extremely lightweight and versatile

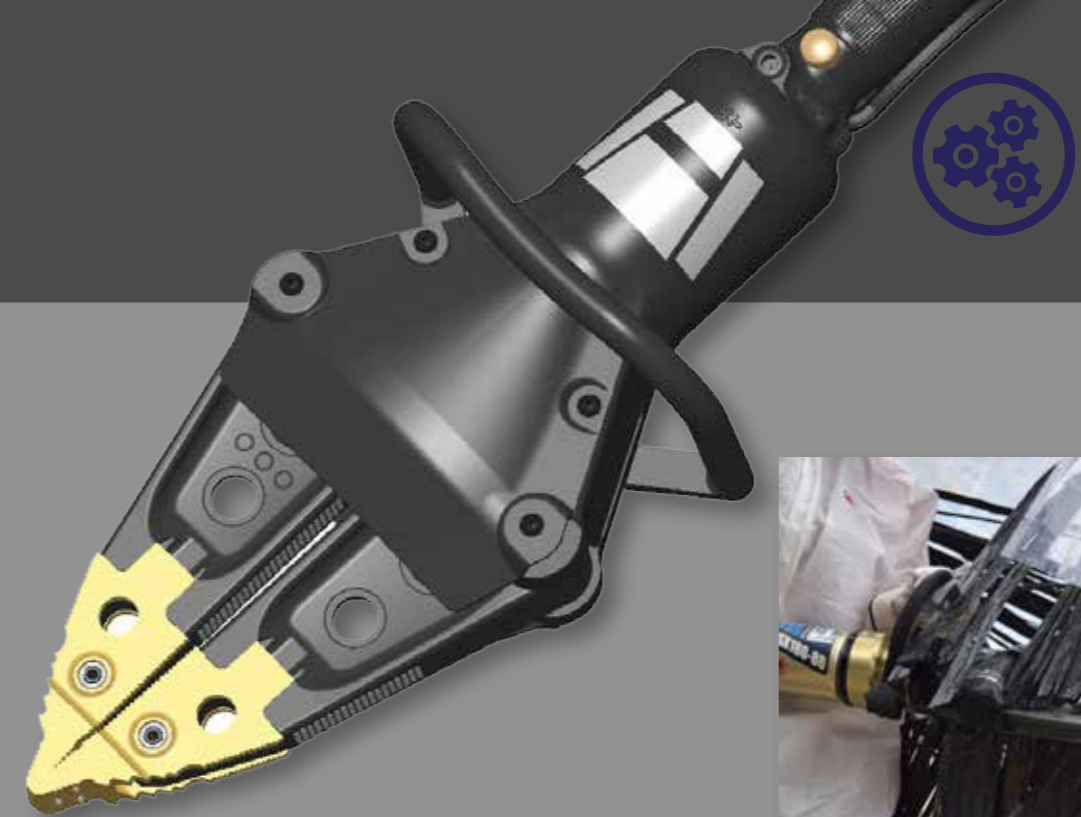
Ideal for areas which are difficult
to access

For disasters, such as earthquakes
and building collapses





INNOVATIVE
New products and
systems for future
challenges



INNOVATIVE



Permanent further development
and improvement of the products
and systems

Ongoing exchange and cooperation
with the automotive industry, for
example regarding topics such as car-
bon car bodies and alternative drives

Focus on future technologies such as
sensor and laser technology



SAFETY
Safe products and processes for
safer working conditions



Attestation for hydraulic Cutter
Bestätigung für ein hydraulisches Schneidgerät
Confirmation pour un ustensile hydraulique-tranchant

according to / entsprechend / correspondant: DIN EN 13204:2016-12

Date of test: 17.02.2017 Version: Ausführung: 1 Tested by: geprüft von: H. BECK
Date de test: 17.02.2017 Version: Ausführung: 1

Manufacturer Hersteller Fabricant	WEBER Hydraulik GmbH Industriegebiet 3 + 4 A-4600 Losenstein
Model Typ Modèle	RSU 180 PLUS
Classification Klassifizierung Classification	BC 180 J - 16,9
Speed/leistung Cutting Performance Performance de coupe	1J - 2K - 3K - 4K - 5K
Article No. Artikel Nr. Numéro d'article	ID.1080423
Nominal pressure Nenndruck Pression de nominale	70 MPa

The tests mentioned in this attestation have been carried out under the supervision of German Testing Institute.
Die in dieser Bestätigung beschriebenen Prüfungen wurden durchgeführt unter Aufsicht des deutschen Prüfinstitutes.

TÜV SÜD Auto Service GmbH
Prüfstelle für Feuerwehrgesäte
Gutleut-Danier-Strasse 7
D-71704 Filderstadt

Phone/Telefon: +49(0)714/7005-310
Telefon: +49(0)714/7005-690
e-mail: feuerwehrspruefstelle@tuev-sued.de

Result / Ergebnis / Résultat :

Above mentioned hydraulic Cutter conforms DIN EN 13204:2016-12
Das oben genannte hydraulische Schneidgerät entspricht der DIN EN 13204:2016-12
L'ustensile hydraulique-tranchant mentionné ci-dessus correspond en DIN EN 13204:2016-12

This attestation applies to units conforming to this model which are manufactured in identical manner.
Diese Bestätigung gilt für Geräte, die diesem Typ entsprechen und in identischer Ausführung gefertigt werden.

Date and sign for approval
Datum und Unterschrift
Date et signature

Filderstadt: 03.03.2017
Beck

This attestation is filed under openable number. Please refer to this document number in your correspondence.
Diese Bestätigung ist unter nebenstehender Nummer abgelegt, die bei jedem Schriftwechsel mit anzugeben ist.

C 04 - 2017

TÜV®



Continuous product tests and
product monitoring

TÜV testing

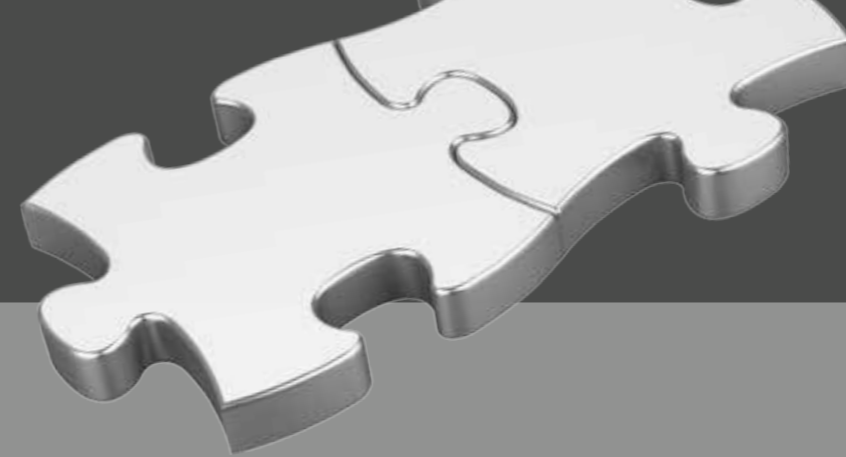
Tests in accordance with EN 13204,
NFPA and DIN

Standardised production processes
that are constantly monitored






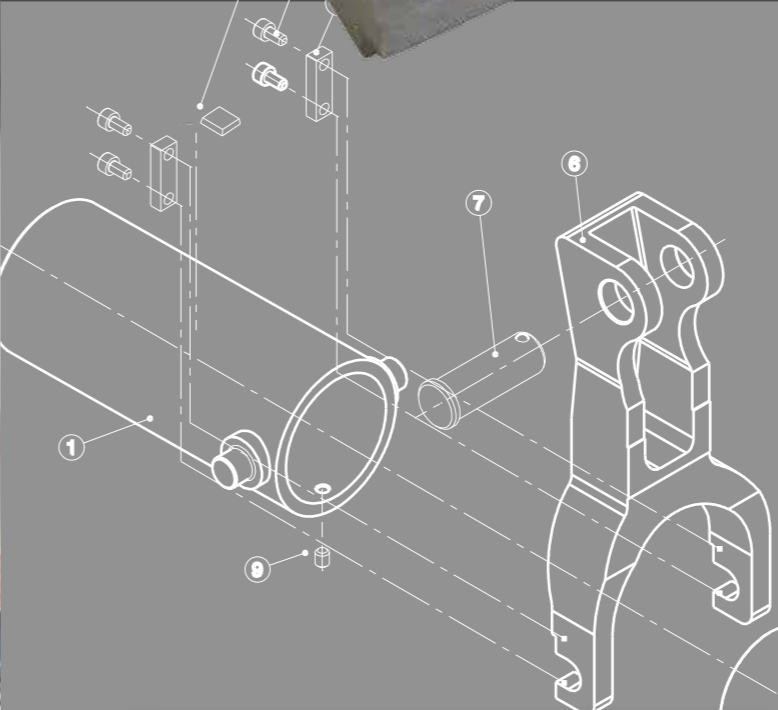
SYSTEM
Engineering, advice, sales, training
and service - all from a single source!



Product development and design
Sales advice
Generation of quotations and delivery
Seminars and training
Service
After-sales
EVERYTHING FROM A SINGLE SOURCE!



 **SERVICE**
Service, repair and care
for a long lifespan



Repair and maintenance of all
hydraulic and pneumatic equipment
Function and load testing
On-site service
Equipment hire service
Rapid spare parts shipping
Seminars and courses





ATTACH
Attachments
for further
possibilities

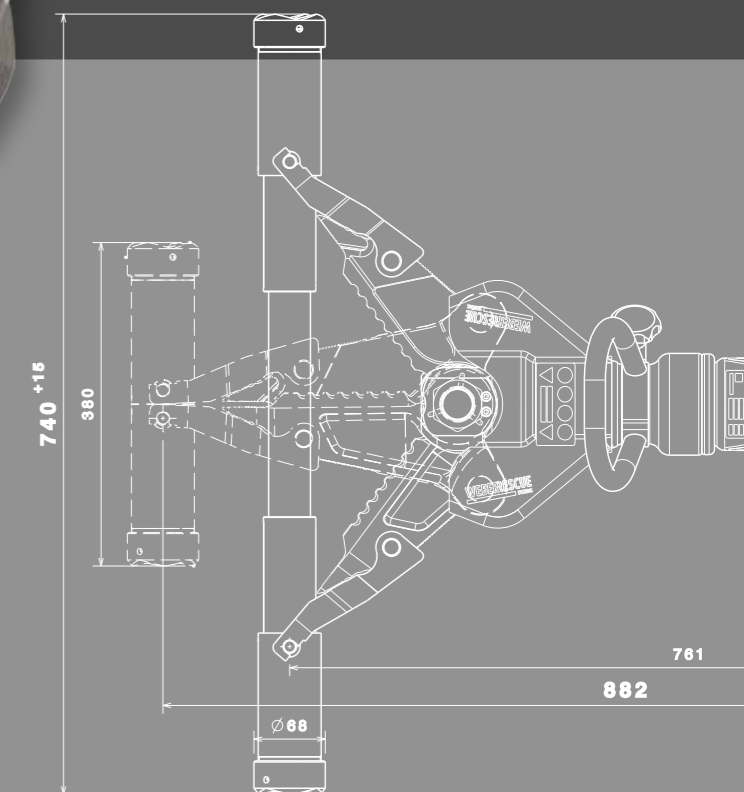


ATTACH

Mechanical rescue ram RZM 740

For attaching on all combi tools
with fixed tips

Increases the spreading distance
up to 740 mm



FLAT-BAGS

FLATBAG
Easy and stable
lifting of heavy loads



Aramid reinforcements for light-weight and corrosion resistance

A special dimpled and antislip surface

Defined, flat lifting area
(No camber, defined final force)

Optimised construction for low
insertion height of 25 mm

Extremely stable bag stack possible
(up to 3 bags)

Protective edges made of rubber

Reflective markings





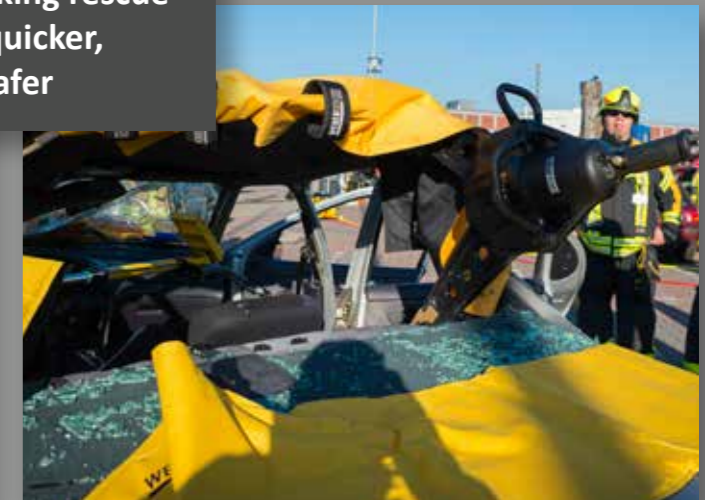
ADDITIONAL
Useful equipment for the whole rescue operation



ADDITIONAL



A wide range of ancillary equipment
Ideal for making rescue operations quicker, easier and safer





Common targets

Defined processes

Permanent communication

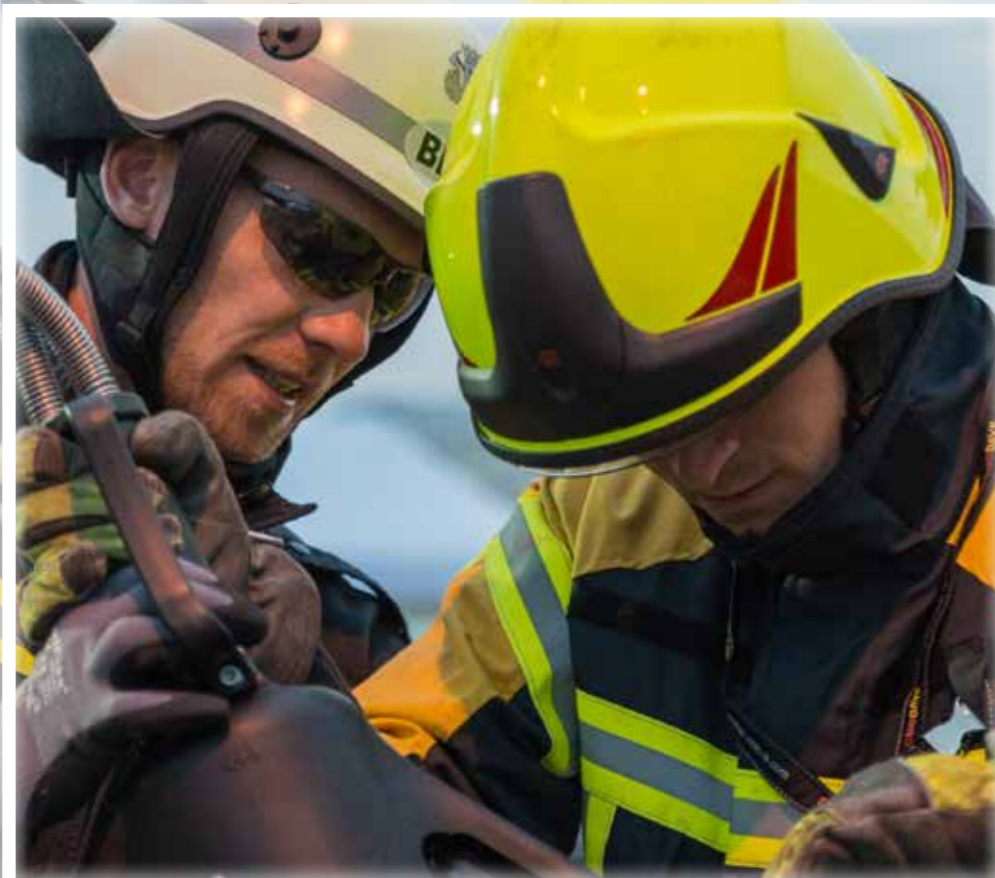
Trust

Active cooperation

= TEAMWORK!



TEAMWORK
Ready to solve challenges together



TRAINING
Theoretical and practical operation
and service of rescue tools



Basics of patient-orientated rescue
New vehicle technology
Truck rescue (TRT 7000)
Maintenance and service programmes
RESCUE DAYS



rescueDAYS



WEBER-HYDRAULIK GMBH

Heilbronner Str. 30
D-74363 Göglingen
Tel. +49 (0) 7135 71-10270
Fax +49 (0) 7135 71-10396
info@weber-rescue.com

Industriegebiet 3+4
A-4460 Losenstein
Tel. +43 (0) 7255 6237-120
Fax +43 (0) 7255 6237-12461
info@weber-rescue.com

WEBERRESCUE
SYSTEMS
www.weber-rescue.com