

NEW!

WEBERRESCUE
SYSTEMS

LET'S CREATE FUTURE ➤

TACTICAL TOOLS

Special equipment
for tactical use

TACTICAL TOOLS FOR SPECIAL USES

Special missions require special equipment!

Life-threatening operations against organised crime and international terrorism quickly push the forces and their equipment to the limit. Police and military forces are required to perform at their best on a daily basis. Conventional means of intervention can slow down operational readiness, as they are often training-intensive, maintenance-intensive, heavy and unwieldy. The point of entry into a building usually poses the first high risk to the officers on duty!

WEBER RESCUE SYSTEMS has taken on this problem and with the TACTICAL TOOLS series has developed solutions which increase the readiness for action and at the same time minimise the danger to life and injury of the emergency services. Easy noiseless handling, lightning-fast availability and when necessary, inconspicuous use. These are the main features of the new product line, which includes combi tools, hydraulic door openers and classic Method Of Entry tools such as Halligan tools and rams.

Our emergency services are committed to us! We at WEBER RESCUE SYSTEMS feel obliged to equip them with the best possible tools to ensure the success of the mission, but above all the health of the men and women who perform at their best every day.

You require further assistance? Please get in touch with us via www.weber-rescue.com.



Scan QR code and
discover more!

CONTENTS

COMBINATION DEVICES.....	4
SPREADERS AND ACCESSORIES.....	6
TRANSPORT SOLUTIONS.....	7
FORCIBLE ENTRY AND DOOR OPENING.....	8
LIFTING AND CUTTING	12
ADDITIONAL EQUIPMENT.....	10
INFORMATION ON PRODUCT PERFORMANCE	18



RIT-TOOL E-FORCE3



Flexible battery-powered combination tool for rapid intervention units and for quick door opening.

- with interchangeable tips to suit the respective application, e.g. for breaking open doors and windows, cutting round steel and chains, lifting loads, pulling obstacles, opening vehicles, etc.
- extremely high cutting and spreading forces
- portable and flexible due to battery-operated drive
- low weight due to state-of-the-art materials
- pulling possible with optional pulling attachments
- sold without battery and tips as standard
- free set composition

Opening width	215 mm
EN classification	AC140H-13,3
EN cutting capacity (EN 13204)	1H-2H-3H-4H-5H
NFPA cutting class	A6-B7-C6-D7-E7-F3
Weight (ready for use)	13.3 kg
Part no.	1093377

 FORGED
  SPEED CONTROL
  X-CHANGE
  CHARGE



HANDVARIO RIT-TOOL

**Fully-fledged hand-operated combination tool for rapid deployment units**

- flexible use thanks to interchangeable tips and a wide range of accessories
- suitable for breaking open doors and windows, cutting round steel, chains, grills, lifting loads, pulling obstacles, opening vehicles
- space-saving, lightweight and can be used anywhere
- submersible up to 25 m
- free set composition
- high-strength, forged lightweight construction blades for better cutting performance
- serrated blades bite firmly into the material
- head section can be rotated 360° for optimum working
- 630 bar nominal pressure

Opening width	215 mm
EN classification	BK25/280G-11,1
EN cutting capacity (EN 13204)	1H-2G-3G-4H-5G
NFPA cutting class	A6-B7-C6-D7-E7-F3
Weight (ready for use)	11.1 kg
Part no.	1100441



ACCESSORIES AND TIPS



Spreader tip
Part no. 1050616



Door opener tip
Part no. 1096859



Special tip
Part no. 1051896



RZM CRT Black Edition
Part No. 1094618 BLK



Pulling device
Part no. 2836033



Chain set
Part no. 2819139

	Weight	Part no.
Spreader tip (2 pcs. required)	0.71 kg	1050616
Door opener tip (2 pcs. required)	0.94 kg	1096859
Special tip (2 pcs. required)	1.22 kg	1051896
Chain set	13.8 kg	2819139
Pulling attachment (2 pcs. required)	1.3 kg	2836033
Mechanical rescue cylinder RZM CRT Black Edition	7,8 kg	1094618BLK

SP 54 AS E-FORCE3

E FORCE



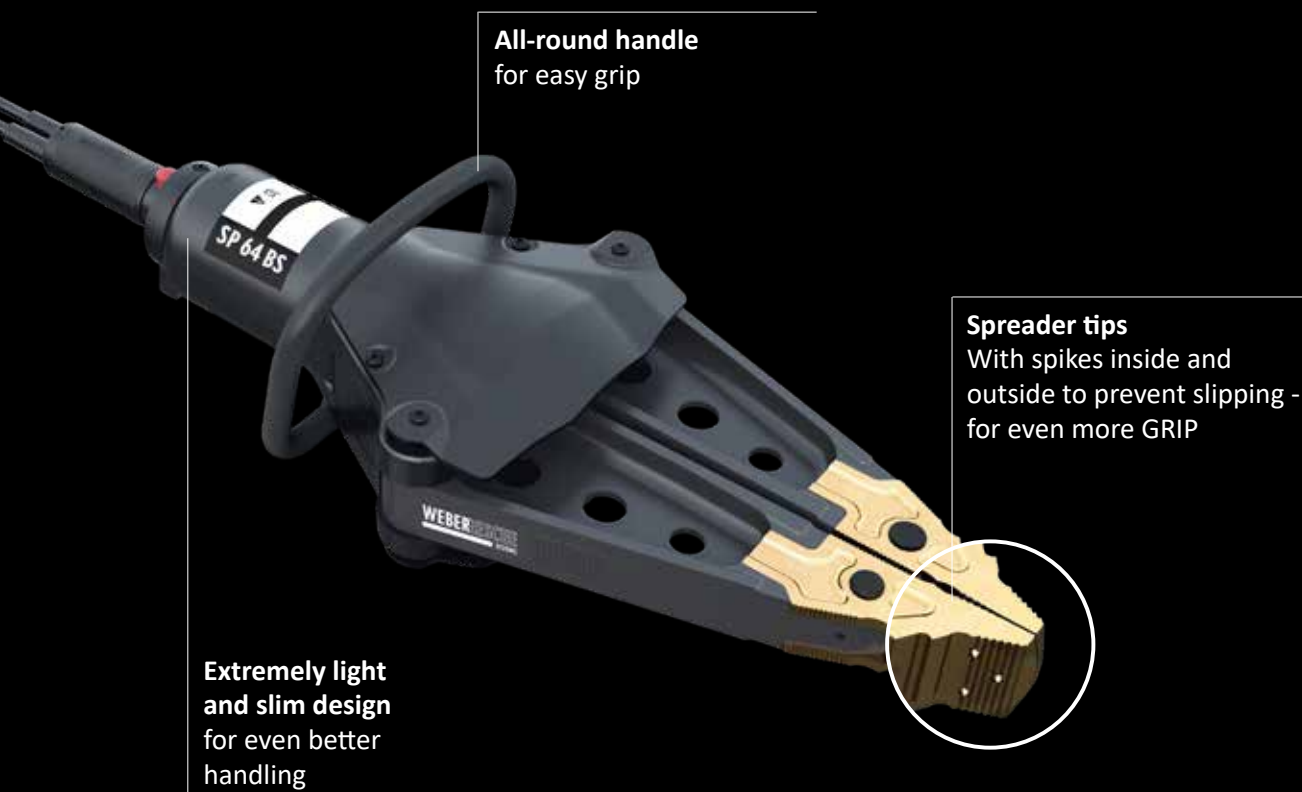
Latest generation of battery-operated spreader

- for flexible use, e.g. inside buildings and off-road
- opening width of the spreader combined with door-opener spikes (page 7) enables the immediate pushing aside of heavy objects behind doors
- tips with interior and exterior spikes for extra GRIP
- wraparound grip for simpler handling and holding

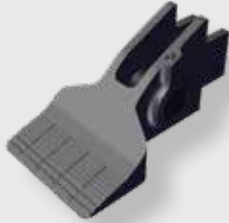
Spreading width	735 mm
Spreading force (in the working area)	55 - 501 kN
Max. crushing force	144 kN
Range	620 mm
Max. pulling power	70 kN
EN classification	AS55/735-20,7
Weight (ready for use)	20.7 kg
Part no.	1091736



THE NEW GENERATION OF SPREADERS



DOOR OPENER TIP FOR SPREADERS



Door opener tip for more functionality and extended application possibilities

- suitable for all WEBER RESCUE spreaders with removable tips
- captive bolts on the mounting fork for quick and simple attachment
- innovative design with additional spikes
- not available as a set - 2 tips are required per unit

Weight	1.29 kg
Part no.	1100623

RIT BACKPACK CARRIER



For easy transport of E-FORCE battery-powered devices and Handvario combi tools on the back

- quick on and off due to quick release fasteners
- no restriction of the freedom of movement of the head when wearing a helmet
- two pockets offer additional space for batteries, tips and other accessories
- optimal weight distribution ensures optimum carrying comfort even over longer distances
- tough and durable material (Cordura nylon with water-repellent coating)
- suitable for RIT-Tool, Handvario RIT-Tool and Handvario SPS 270 H

Dimensions	864 x 304 x 165 mm
Weight	2.6 kg
Part no.	1100364

E-FORCE TRANSPORT BOX



Robust PELI 1740 case for transport and storage of E-FORCE rescue tools

- with tailored foam insert
- suitable for air transport thanks to a fully automatic pressure equalisation valve
- suitable for RIT-Tool- E-FORCE3
- Suitable for RIT-Tool

Dimensions	1122 x 409 x 356mm
Weight	12.5 kg
Part no.	1088016

DO 105 DOOR OPENER SET



Door opener set for quick and silent breaking open of doors and lifting of loads

- comprising hand pump, hose, door opener and case
- ultra-light DO 105 door opener with 360° rotating coupling for easy handling
- ultra-light hand pump EPH 0203 with 570 bar nominal pressure
- robust, waterproof case with integrated pressure equalisation valve in Eurobox standard dimensions 600 x 400 x 223 mm incl. insert to protect all equipment
- C 45-9 mini cutter available as optional accessory (compartment already prepared in the case)

Included in the set:	Weight	Part no.
DO 105 door opener	3.3 kg	1099556
Hand pump EPH 0203	3.3 kg	1099835
2 m black hose with SKS quick coupling system	1.2 kg	1099974
Complete set incl. case	11,4 kg	1100718

DO 105 DOOR OPENER



For rapid opening doors with complex closing mechanism

- in combination with tools such as Halligan tools
- noiseless operation with hand pump
- low weight
- single-action system
- optimized claw for strong hold in door gap

Closed length	225 mm
Extended length	330 mm
Max. lifting force	40 kN (bei 570 bar)
Max. lifting force	49 kN (bei 700 bar)
Weight	3.3 kg
Part no.	1099556

HAND PUMP EPH 0203



Ultra-light hand pump

For use in combination with single-action devices such as DO 105, DO 120 and C 45-9.

Useable oil volume	0.3 l
Delivery per stroke	1.8 cm³
Nominal pressure	570 bar
Weight	3.3 kg
Part no.	1099835

MINI-CUTTER C 45-9



Single-action mini cutter

- for cutting tubes, grills, rods, etc.
- very small design
- easiest handling due to low weight and compact shape

Dimensions	267 x 66 x 88 mm
Opening width	45 mm
Round steel bar	18 mm (at 370 bar) 20 mm (at 700 bar)
Weight	3.9 kg
Part no.	1070758



DO 120 DOOR OPENER



The increased lifting force enables doors with complex closing mechanisms to be opened quickly

- for use in combination with tools such as Halligan tools
- quiet operation with hand pump
- single-action hydraulic system

Closed length	278 mm
Extended length	398 mm
Max. lifting force	90.7 kN (at 570 bar)
Max. lifting force	114.5 kN (at 700 bar)
Weight	7.1 kg
Part no.	1075922

DO 140 E-FORCE2 DOOR OPENER

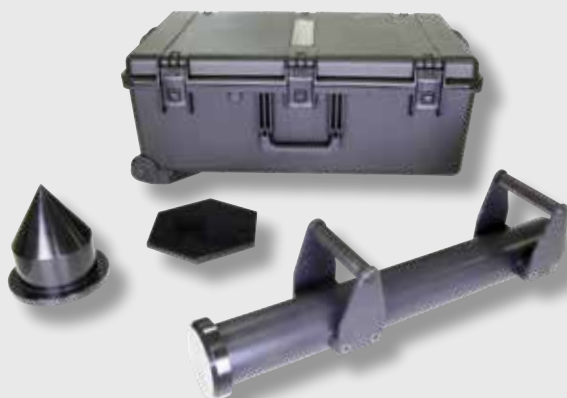


Double-action system specially developed for special applications

- fast and effective breaking open of doors
- metal doors with multiple locks and safety doors also pose no problem
- available as rechargeable battery version (battery not included)

Closed length	-1
Extended length	140
Max. lifting force	105 kN11,0
Weight (ready for use)	12.9
Part no.	1078140

ONE-MAN RAM

**Special tool for breaking doors down quickly**

- power-Shot technology for maximum effectiveness
- 90% reduction of the recoil effect
- interchangeable attachments (standard, tip, hexagon)
- in a practical carrying case incl. wheels

Weight	33.5 kg
Part no.	1087806



POWERWEDGE SPK 250



 SINGLE  PUSH CONTROL

Wedge-shaped hydraulic spreading device

- creates initial openings for lifting cushions in the smallest gaps
- insertion height only 8 mm
- specially hardened spreading plates

Max. spreading height	61
Max. spreading force	248 kN
Weight	9.3 kg
Part no.	1822861

POWERWEDGE SPK 250 E-FORCE2



 CHARGE

Wedge-shaped hydraulic spreading device

- creates initial openings for lifting cushions in the smallest gaps
- specially hardened spreading plates
- available as rechargeable battery version (battery not included)

Max. spreading height	61 mm
Max. spreading force	248
Weight (ready for use)	12.7 kg
Part no.	1077812

AKKUPAC ECO



 ECO  SINGLE  CHARGE

Extremely light hydraulic power unit with backpack carrying facility

- wide, comfortable carry straps for secure fit
- with connection possibilities for two batteries
- delivered without rechargeable battery
- 1.2 m hose allows great freedom of movement
- universal functionally applicable by using the Single coupling


Nominal pressure	700 bar
Oil volume	2.5 l
Usable volume	2.3 l
Weight (ready for use)	11.2 kg
Part no.	1081828BLK

CUTTER S 25-20

**Compact and versatile cutter**

- replaceable carbide inserts for cutting locks, chains, etc.
- for cutting through metal rods and reinforcement
- single-handed use possible

Opening width	25 mm
Weight	7,6 kg
Part no.	1070692

 PUSH CONTROL
  SINGLE
  360° HANDLE
  LIGHTWEIGHT

RECHARGEABLE S 25-20 CUTTER E-FORCE2

**Compact and versatile cutter**

- replaceable carbide inserts for cutting locks, chains, etc.
- for cutting through metal rods and reinforcement
- single-handed use possible
- Available as rechargeable battery version (battery not included)

Opening width	25 mm
Weight (ready for use)	9,9kg
Part no.	1082519

 PUSH CONTROL
  CHARGE
  360° HANDLE
  LIGHTWEIGHT



BREAKING TOOL SET



Combination of striking tool and Halligan tool - 770 mm

- axe with a sturdy, lightweight, fibreglass handle and flat head to complement the Halligan tool, e.g. when opening doors
- can be used both as a wedge for holding open the gap created and for striking in the Halligan tool
- sturdy and extra-light fibreglass shaft
- Halligan tool with lever claw
- velcro tape included in the set for binding and as a carry aid

Dimensions	930 x 220 x 160 mm
Weight	8.3 kg
Part no.	1081981

HALLIGAN TOOL



Versatile breaking and levering tool

- very slim and lightweight design
- narrow, curved cutting edge for easy breaking open of doors and windows
- extremely non-slip grip areas
- additional striking surface on the lever claw for confined spaces
- galvanised surface for long life

Type	Gewicht	Teile-Nr.
770 mm lifting claw in black	4.5 kg	1089461RIT
770 mm lifting claw	4.5 kg	1089461
920 mm lifting claw	5.0 kg	1089641
770 mm cutting claw	4.5 kg	1089642
920 mm cutting claw	5.0 kg	1089643

FORCIBLE ENTRY WEDGE



Wedge for hammering in when opening doors or securing gaps

- curved surface for better grip in the gap
- extremely light, only 140 g per wedge
- includes hole for fixing to the shaft of the Halligan tool
- single wedge or set of two made of anodised aluminium
- lightweight and solid

Weight	0.14 kg
Part no.	WRS1076

GLAS-EX AND CENTRE PUNCH



Set comprising GLAS-EX hand saw and centre punch

- hand saw for sawing out bonded laminated safety glass (LSG)
- centre punch for safe removal of single-pane safety glass (ESG), also available separately
- accessories: Spare saw blade

	Weight	Part no.
Glas-Ex	1,5 kg	8114161
Centre punch	0,06 kg	8027676
Spare saw blade	0,12 kg	8032858

GLAS-EX TURBO



For the removal of laminated glass

- for quick removal of LSG (up to 10 mm thickness)
- suitable for all cordless drills (10 mm shank diameter)
- very agile for cutting tight curves
- most of the glass is removed to the outside
- due to the short blade and the short stroke, cuts directly above the dashboard are also possible

Weight	0.9 kg
Part no.	1095126

STEPPED DRILL



Heavy-duty stepped drill for metal from MILWAUKEE

- ideal for creating application points for lashing straps on accident vehicles
- 14 steps from 6 to 35 millimetres diameter
- long service life and special geometry for easy work
- suitable for all cordless drills (10 mm shank diameter)

Weight	0.2 kg
Part no.	1100782

EXTRICATION RECIPROCATING SAW BLADES



Special saw blades with carbide teeth for high-strength steels

- reinforced blade to protect against breakage and for less vibration
- perma-Shield coating for reduced heat development
- suitable for almost all common reciprocating saws

	Part no.
EXTRICATION SET saw blades with storage pouch 4 saw blades 150 mm / hard metal teeth 6 saw blades 230 mm / hard metal teeth	1078478
Saw blade 150 mm	1078476
Saw blade 230 mm	1078477

STAB-FIX



Versatile wedges made of recycled PE for variable support to keep gaps open

- from recycling plastic (PE)
- durable and splinter-proof
- resistant to oil and chemicals
- permissible load up to 110 kg/cm²
- pyramid shape prevents slipping

Type	Dimensions	Weight	Part no.
Wedge 75	225 x 75 x 80 mm	0.7	3191796
Wedge 150	225 x 150 x 80 mm	1.3	3191800

BLACK PROTECTIVE BLANKET



Soft protective blanket, e.g. to protect the patient from splinters, glass and dust

- ideal size for simultaneous protection of two persons
- material: Cordura 200 with a replaceable Polyglas viewing window
- outer material water-repellent, as well as resistance to wear and tear
- material can be washed at 40°C
- packaged in transport case

Dimensions	200 x 100 CM
Weight	2.85
Part no.	1102507


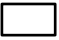
BATTERY-POWERED ACCESSORIES








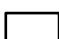
	Weight	Part no.
spare rechargeable batteries 28 V 5.0 Ah from MILWAUKEE	1.04 kg	1075189
battery bag for one battery (without strap)	0.2 kg	1056921
strap for battery case	0.1 kg	1056920
onboard charger	1.0 kg	1060423
mains charger 110 V for 1 battery	0.8 kg	1054099
mains charger 230 V for 1 battery	0.8 kg	1054097
continuous power supply	4.0 kg	1060422
mains power adapter 230 V	5.0 kg	1060426
mains power adapter 110 V		
carrying strap set (1 carrying strap + 1 fastening loop) for E-FORCE tools	0.4 kg	1080657
carrying strap	0.3 kg	1078259
fastening loop	0.1 kg	1078261
battery-powered lighting 28V LED RESCUE LIGHT	7.0 kg	1084044

INFORMATION ON PRODUCT PERFORMANCE

EN CUTTING CLASSES

Profile type	1 Round steel bar	2 Flat material	3 Round tube	4 Square section tube	5 Rectangular section tube
					
Category / Letter	Diameter	Thickness x width	Outer diameter x wall thickness	Dimension x wall thickness	Dimension x wall thickness
A	14 mm	30 x 5 mm	21.3 x 2.3 mm	–	–
B	16 mm	40 x 5 mm	26.4 x 2.3 mm	–	–
C	18 mm	50 x 5 mm	33.7 x 2.6 mm	35 x 3 mm	–
D	20 mm	60 x 5 mm	42.6 x 2.6 mm	40 x 4 mm	50 x 25 x 2.5 mm
E	22 mm	80 x 8 mm	48.3 x 2.9 mm	45 x 4 mm	50 x 30 x 3.0 mm
F	24 mm	80 x 10 mm	60.3 x 2.9 mm	50 x 4 mm	60 x 40 x 3.0 mm
G	26 mm	100 x 10 mm	76.1 x 3.2 mm	55 x 4 mm	80 x 40 x 3.0 mm
H	28 mm	110 x 10 mm	76.1 x 4.0 mm	60 x 4 mm	80 x 40 x 4.0 mm
I	32 mm	120 x 10 mm	88.9 x 4.0 mm	60 x 5 mm	80 x 40 x 5.0 mm
J	36 mm	130 x 10 mm	88.9 x 5.0 mm	70 x 4 mm	100 x 50 x 4.0 mm
K	40 mm	140 x 10 mm	101.6 x 4.0 mm	70 x 5 mm	100 x 50 x 5.0 mm

NFPA CUTTING CLASSES

Material category	A Round steel	B Flat steel	C Round tube	D Rectangular section tube	E Angle iron	F Rectangular tube	
							
Material acc. norm NFPA 1936							
Performance level	Diameter	Thickness x width	Nominal size	Outer diameter x wall thickness	Dimension x wall thickness	Angle dimension x wall thickness	Dimension x wall thickness
1	9.5 mm ⅜ in	6.4 x 13.7 mm ¼ x ½ in	⅜ in	17.3 x 2.2 mm 0.68 x 2.20 in	12.7 x 1.5 mm ½ x 0.06 in	12.7 x 3.2 mm ½ x ⅝ in	25 x 50 x 1.7 mm 1 x 2 x 0.065 in
2	12.7 mm ½ in	6.4 x 25,4 mm ¼ x 1 in	¾ in	26.5 x 2.8 mm 1.05 x 0.11 in	19.1 x 1.5 mm 1 ¾ x 0.06 in	25.4 x 3.2 mm 1 x ⅝ in	25 x 50 x 2.1 mm 1 x 2 x 0.083 in
3	15.8 mm ⅝ in	6.4 x 50.8 mm ¼ x 2 in	1 in	33.5 x 3.3 mm 1.32 x 0.13 in	25.4 x 2.0 mm 1 x 0.08 in	31.7 x 4.8 mm 1 ¼ x ⅝ in	25 x 50 x 3.04 mm 1 x 2 x 0.120 in
4	19.1 mm ¾ in	6.4 x 76.2 mm ¼ x 3 in	1 ¼ in	42.2 x 3.2 mm 1.66 x 0.14 in	31.7 x 3.0 mm 1 ¼ x 0,12 in	38.1 x 4.8 mm 1 ½ x ⅝ in	50 x 76 x 3.178 mm 2 x 3 x 0.125 in
5	22.2 mm ⅞ in	6.4 x 101.6 mm ¼ x 4 in	1 ½ in	48.3 x 3.2 mm 1.90 x 0.15 in	38.1 x 3.0 mm 1 ½ x 0.12 in	38.1 x 6.35 mm 1 ½ x ¼ in	50 x 76 x 4.78 mm 2 x 3 x 0.125 in
6	25.4 mm 1 in	9.5 x 76.2 mm ⅝ x 3 in	2 in	60.5 x 3.8 mm 2.38 x 0.15 in	44.5 x 3.0 mm 1¾ x 0.12 in	44.5 x 6.35 mm 1 ¾ x ¼ in	50 x 101 x 4.78 mm 2 x 4 x 0.188 in
7	31.8 mm 1 ¼ in	9.5 x 101.6 mm ⅝ x 4 in	2 ½ in	73.2 x 5.1 mm 2.88 x 0.2 in	50.8 x 3.8 mm 2 x 0.15 in	38.1 x 9.5 mm 1 ½ x ⅝ in	50 x 101 x 6.4 mm 2 x 4 x 0.250 in
8	38.1 mm 1 ½ in	9.5 x 127 mm ⅝ x 5 in	3 in	88.9 x 5.6 mm 3.50 x 0.22 in	63.5 x 4.8 mm 2 ¼ x 0.19 in	50.8 x 9.5 mm 2 x ⅝ x in	
9	44.5 mm 1 ¾ in	9.5 x 152.4 mm ⅝ x 6 in	3 ½ in	101.6 x 5.8 mm 4.00 x 0.23 in	76.2 x 4.8 mm 3 x 0.19 in	63.5 x 9.5 mm 2 ½ x ⅝ in	



WEBER-HYDRAULIK GMBH

Heilbronner Straße 30
74363 Güglingen, Germany
Phone +49 7135 71-10270

Emil Weber Platz 1
4460 Losenstein, Austria
Phone +43 7255 6237-0

info@weber-rescue.com
www.weber-rescue.com



@weberrescue

WEBERRESCUE
SYSTEMS